

The Chehalis River Basin Flood Authority

Established in 2008 shortly after the December 2007 flood, the Chehalis River Basin Flood Authority (Flood Authority) is made up of 13 local jurisdictions across the basin that share a mission to reduce flood hazards and minimize adverse impacts to people, property, and the environment. The Flood Authority oversees the **Chehalis River Basin Flood Warning System** and administers **locally driven projects** that reduce flood-related impacts throughout the basin.

The Flood Authority is central to the Chehalis Basin Strategy. It appoints three of the seven voting Chehalis Basin Board members, and the Office of Chehalis Basin (OCB) depends on a strong partnership with it to create local, on-the-ground solutions that protect people and communities from flood damage. The Board and OCB will continue to provide funding for Flood Authority projects through the Chehalis Basin Strategy.

Chehalis River Basin Flood Authority Members

Grays Harbor County

City of Aberdeen
City of Cosmopolis
City of Hoquiam
City of Montesano
City of Oakville

Lewis County

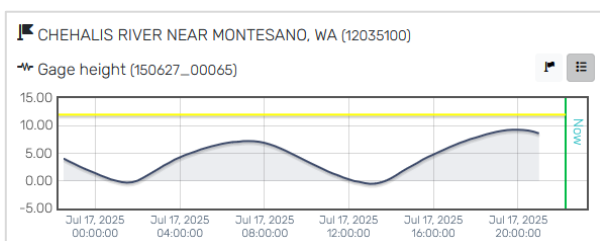
City of Centralia
City of Chehalis
City of Napavine
Town of Pe Ell

Thurston County

Town of Bucoda

The Chehalis River Basin Flood Warning System

The Flood Authority administers the Chehalis River Basin Flood Warning System to provide critical safety alerts to basin residents. With over 300 hydrometeorological data sensors and 13 key river gauges across the basin, the system provides real-time information to track and monitor flood conditions (e.g., rising rivers, weather forecasts, and road closures) and sends email alerts to subscribers, which can afford them more time to respond to rising water levels. The system is funded by the three counties.

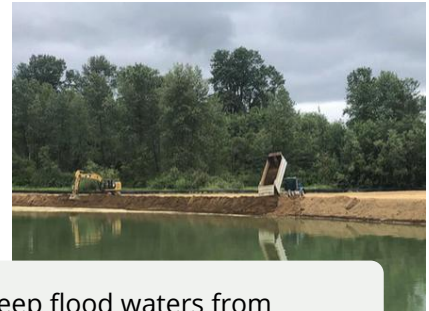


Want to sign up for
Flood Warning System alerts?
Go to chehalis.onerain.com



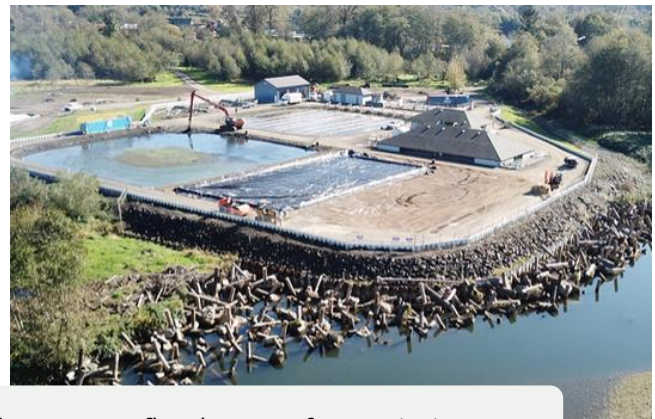
Funding local flood solutions

In addition to the Flood Warning System, the Flood Authority invests in local flood solutions to protect people, property, and infrastructure and to improve community readiness and resiliency. Since 2008, it has completed **more than 100 local projects**.



Farm pads protect farm livelihoods (left), **floodproofing** efforts keep flood waters from damaging homes (middle), and **erosion management** projects use bioengineering to slow erosion and prevent land and structures from being washed away (right).

Photo credit: The Chehalis River Basin Flood Authority



Engineered flood protection technologies remove flood waters from priority areas and protect critical infrastructure— such as the **pump station** at the Chehalis-Centralia Airport (right) and the Montesano Wastewater Treatment Plant project (left). *Photo credit: The Chehalis River Basin Flood Authority*

For more information



Learn more at <https://officeofchehalisbasin.com/local-flood-solutions>
Questions? Email Scott Boettcher at scottb@sbgh-partners.com

