

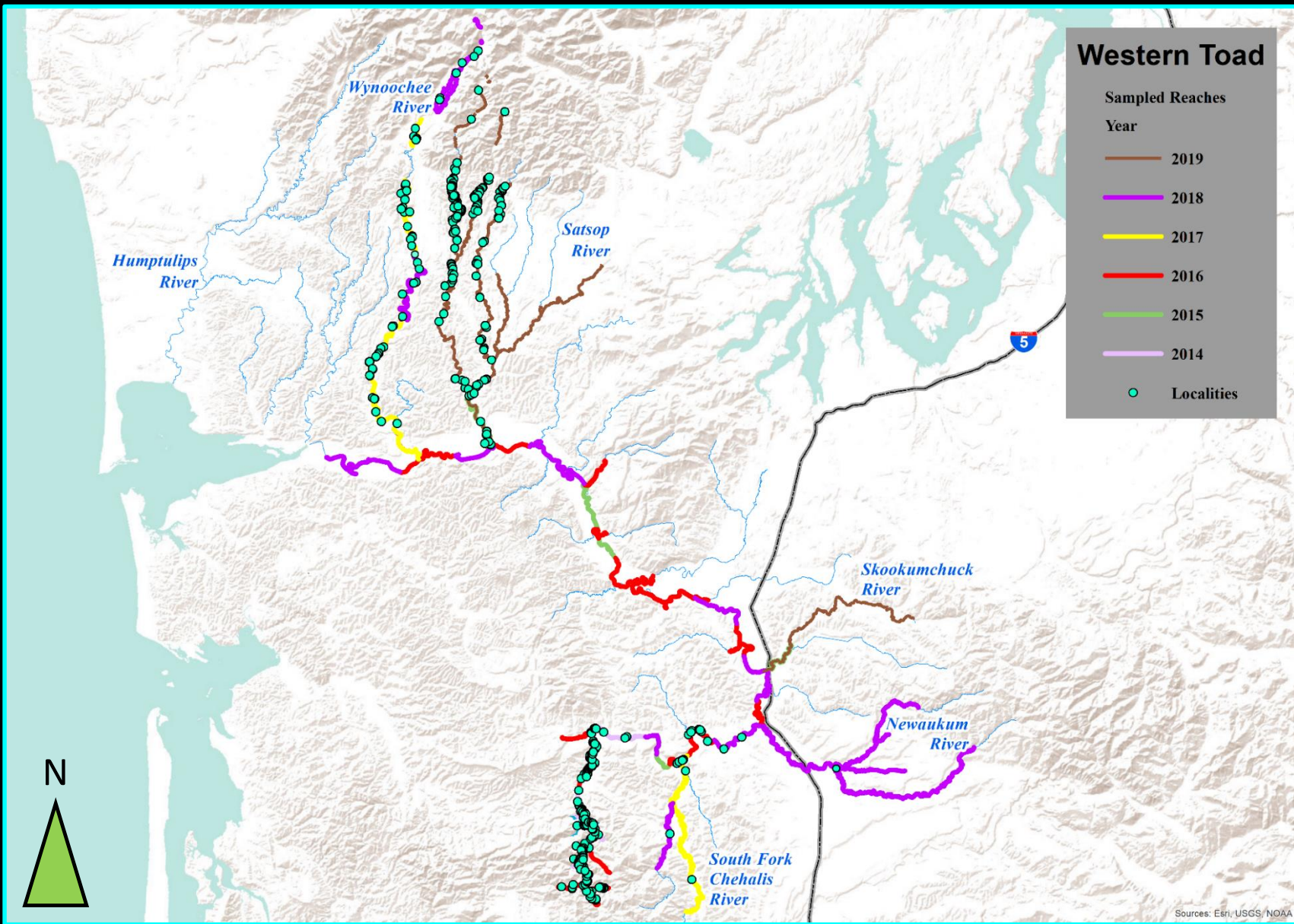


# **Conservation Challenges for the Stillwater-Breeding Western Toad in the Chehalis Basin**

**Marc Hayes  
Julie Tyson  
Keith Douville**

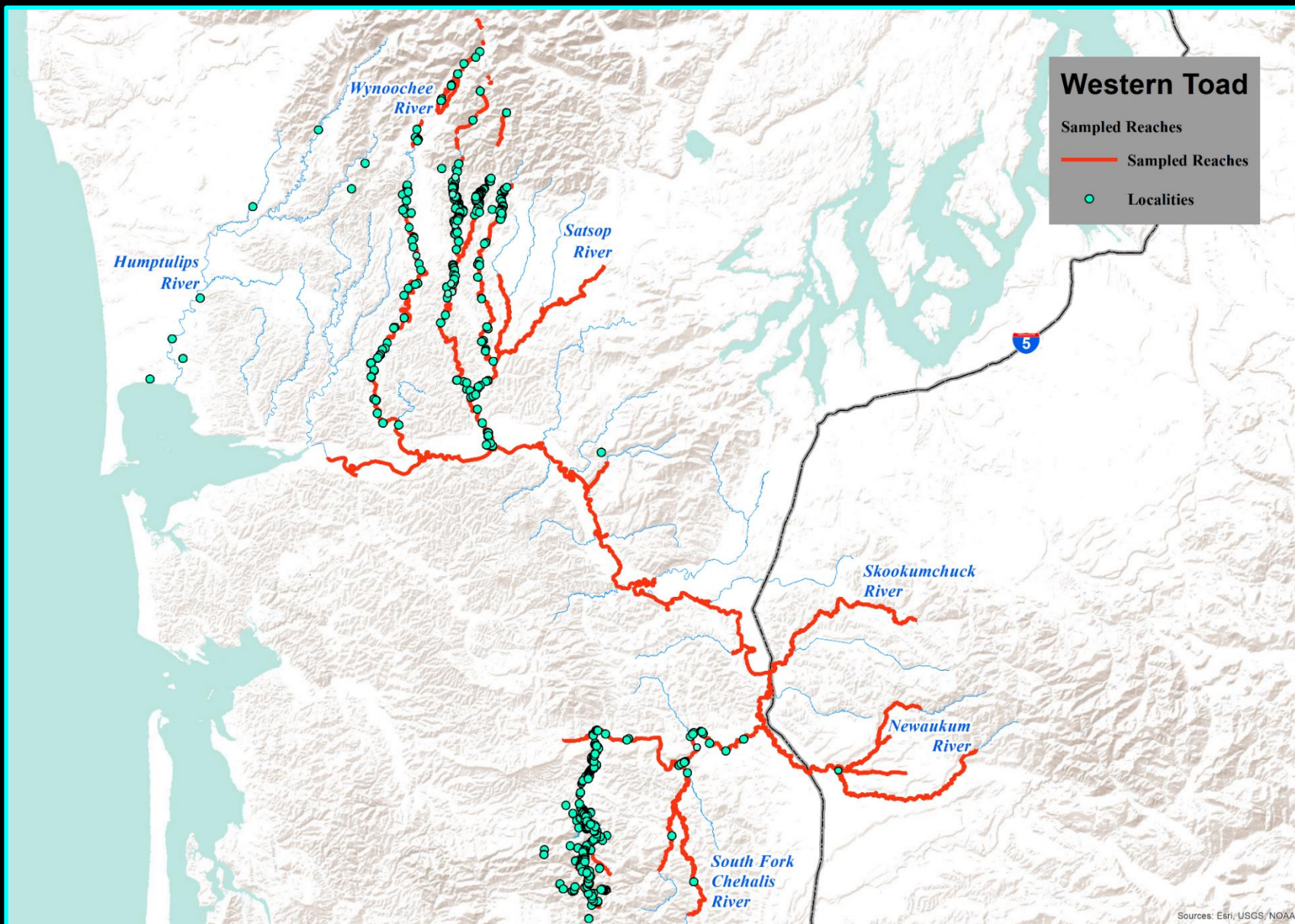


## Surveyed Reaches 2014-2019





# All Western Toad Records for Chehalis Basin

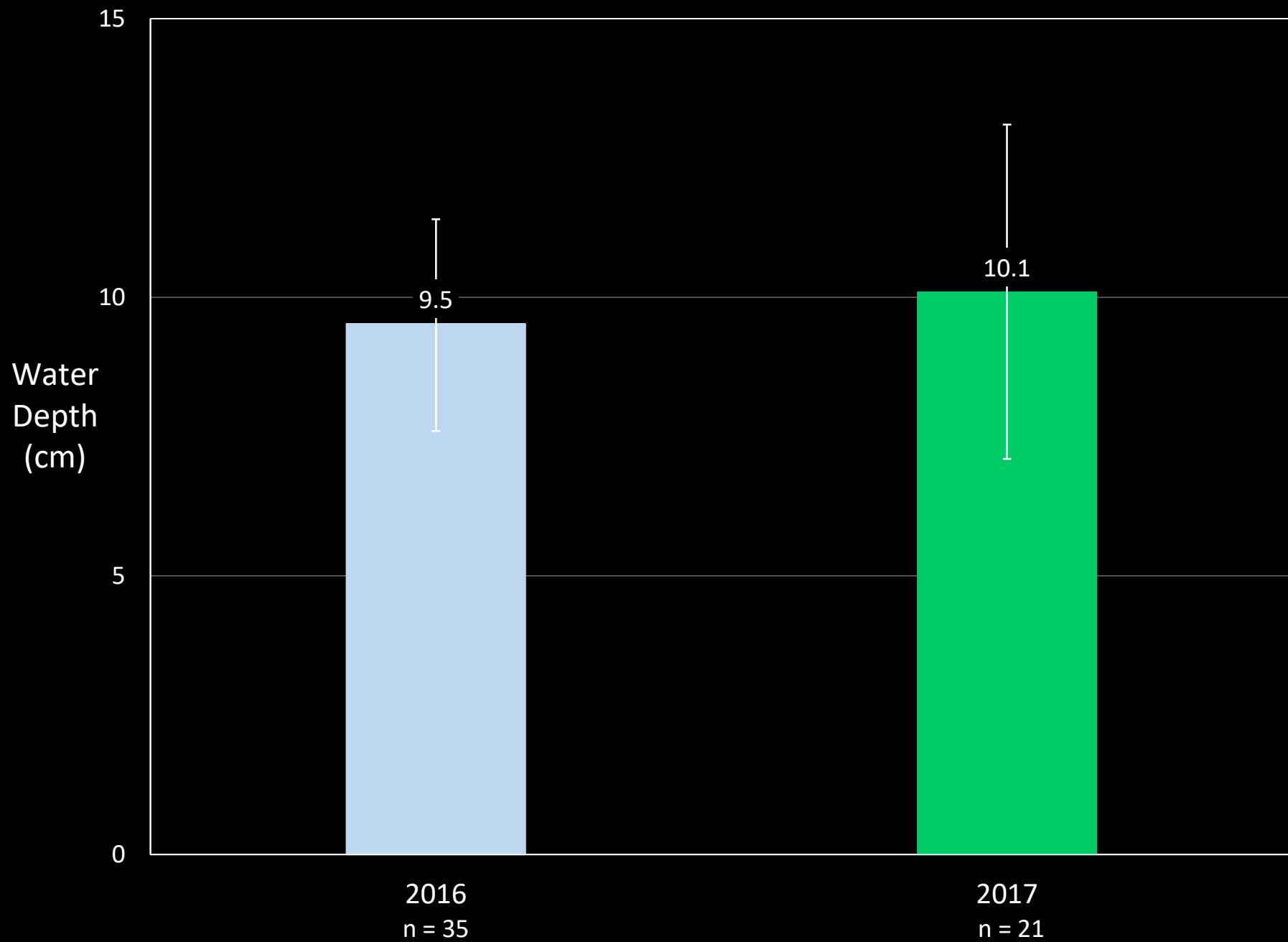


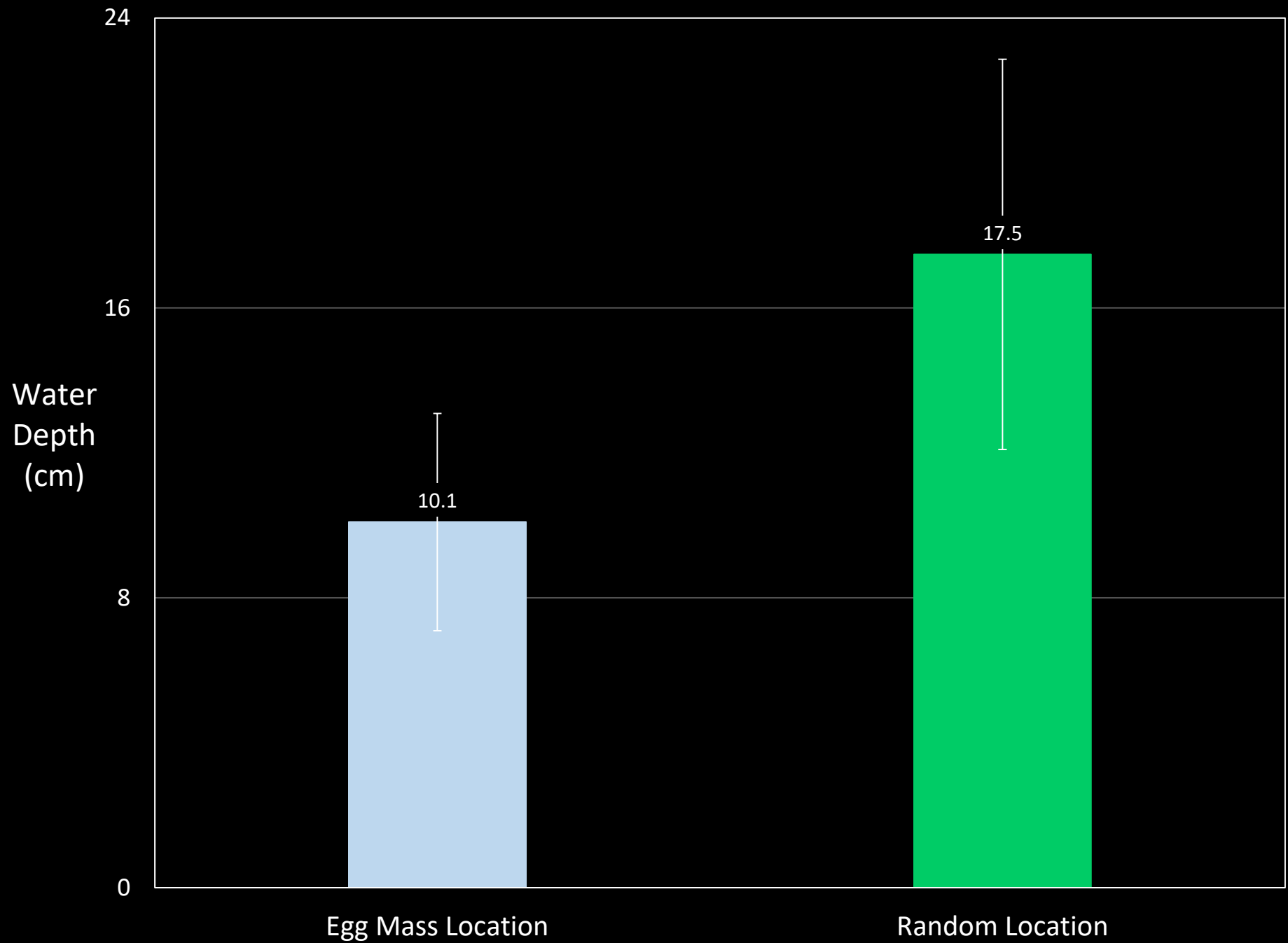


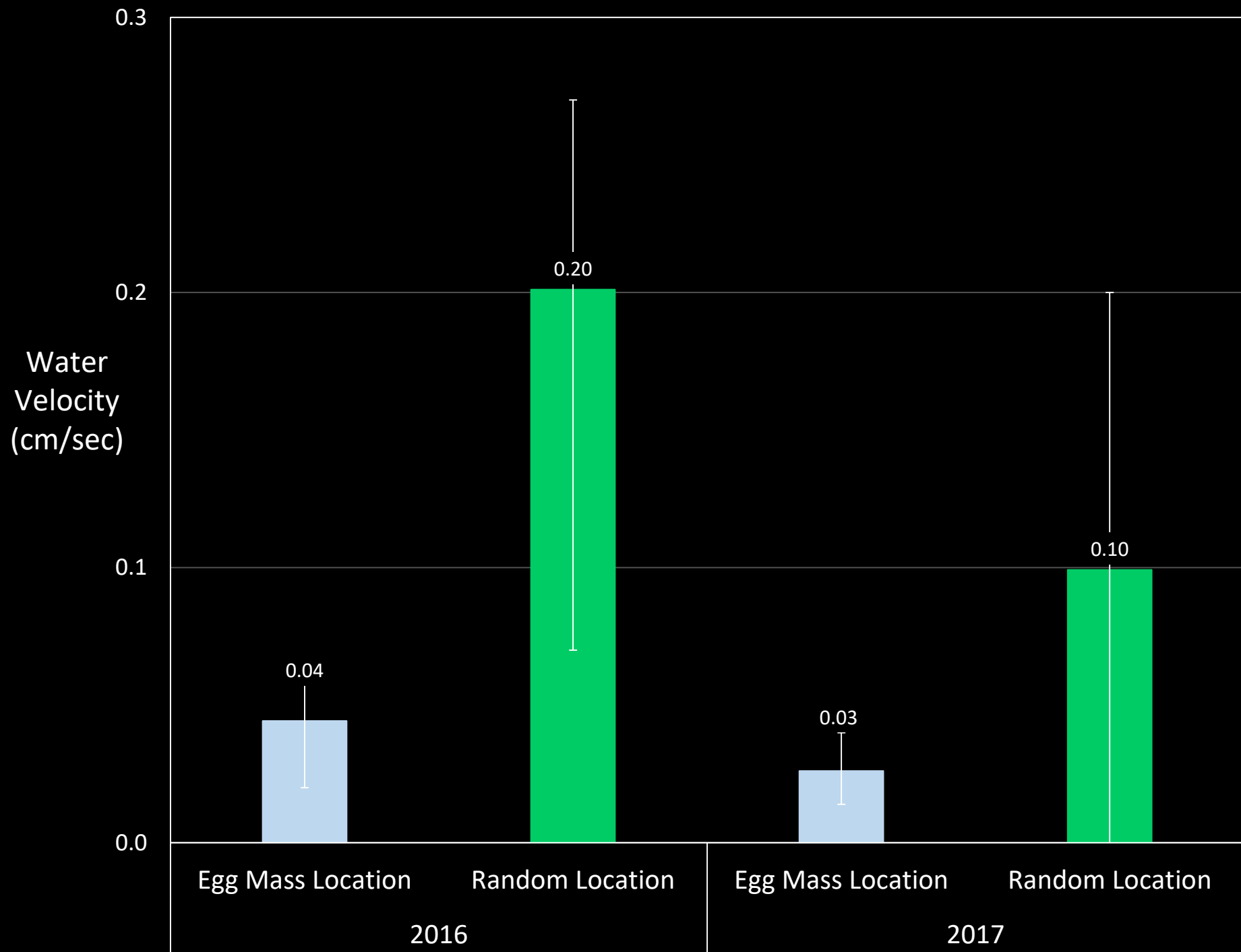
## Western Toad Egg Deposition

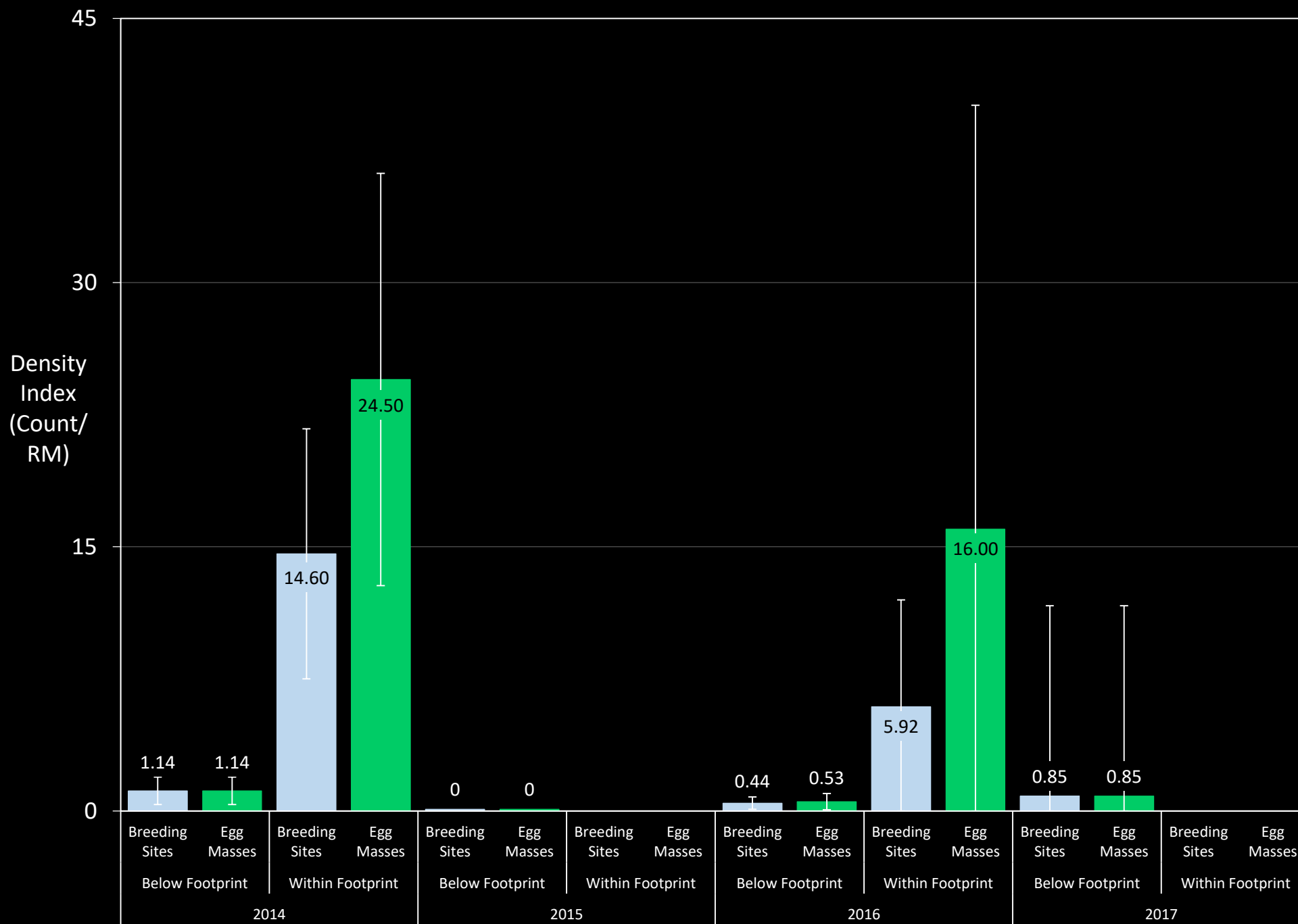
---

- Eggs laid in paired jelly strings of 6,000-22,000
- In shallow water
- Unattached to any brace

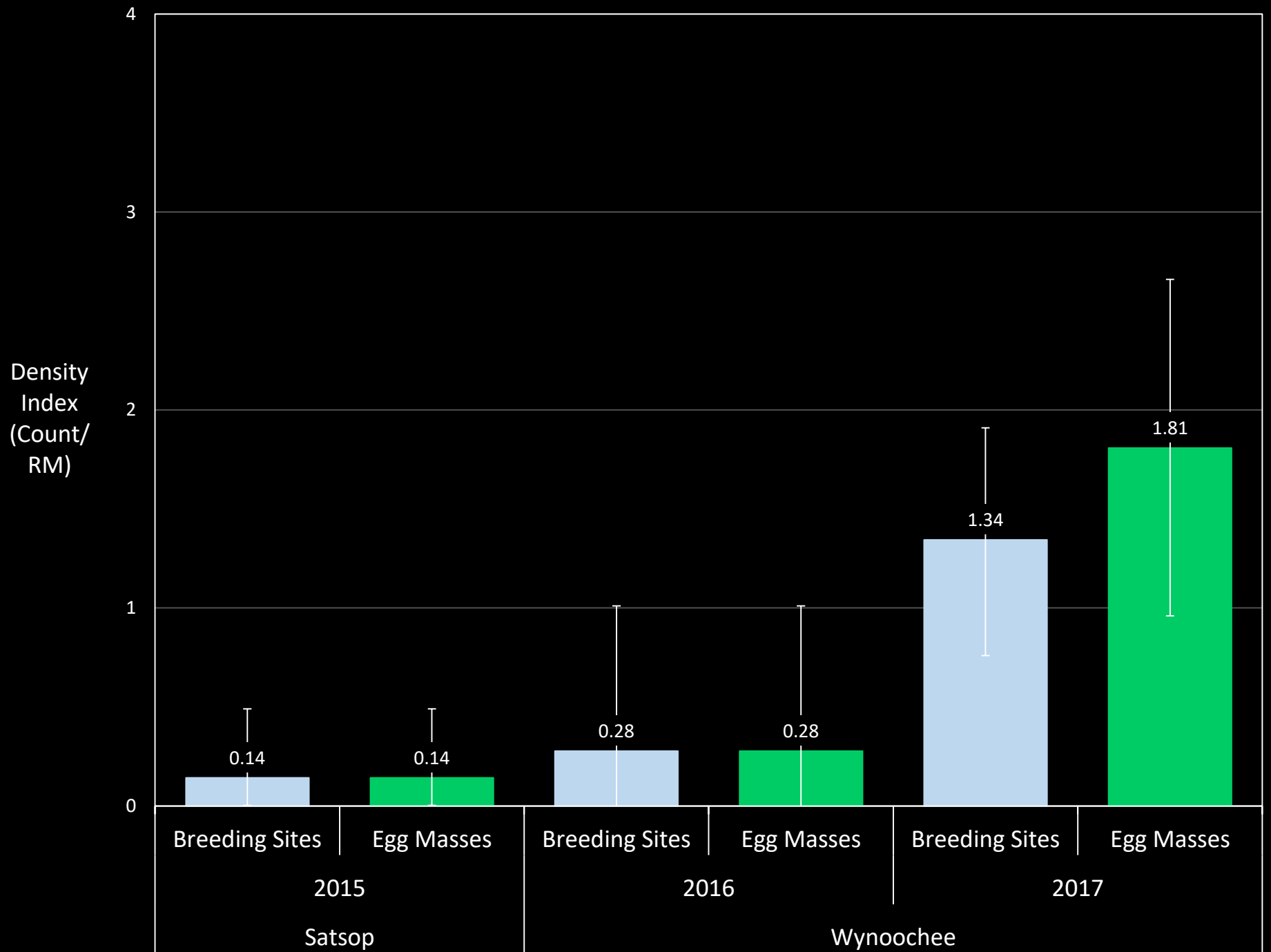








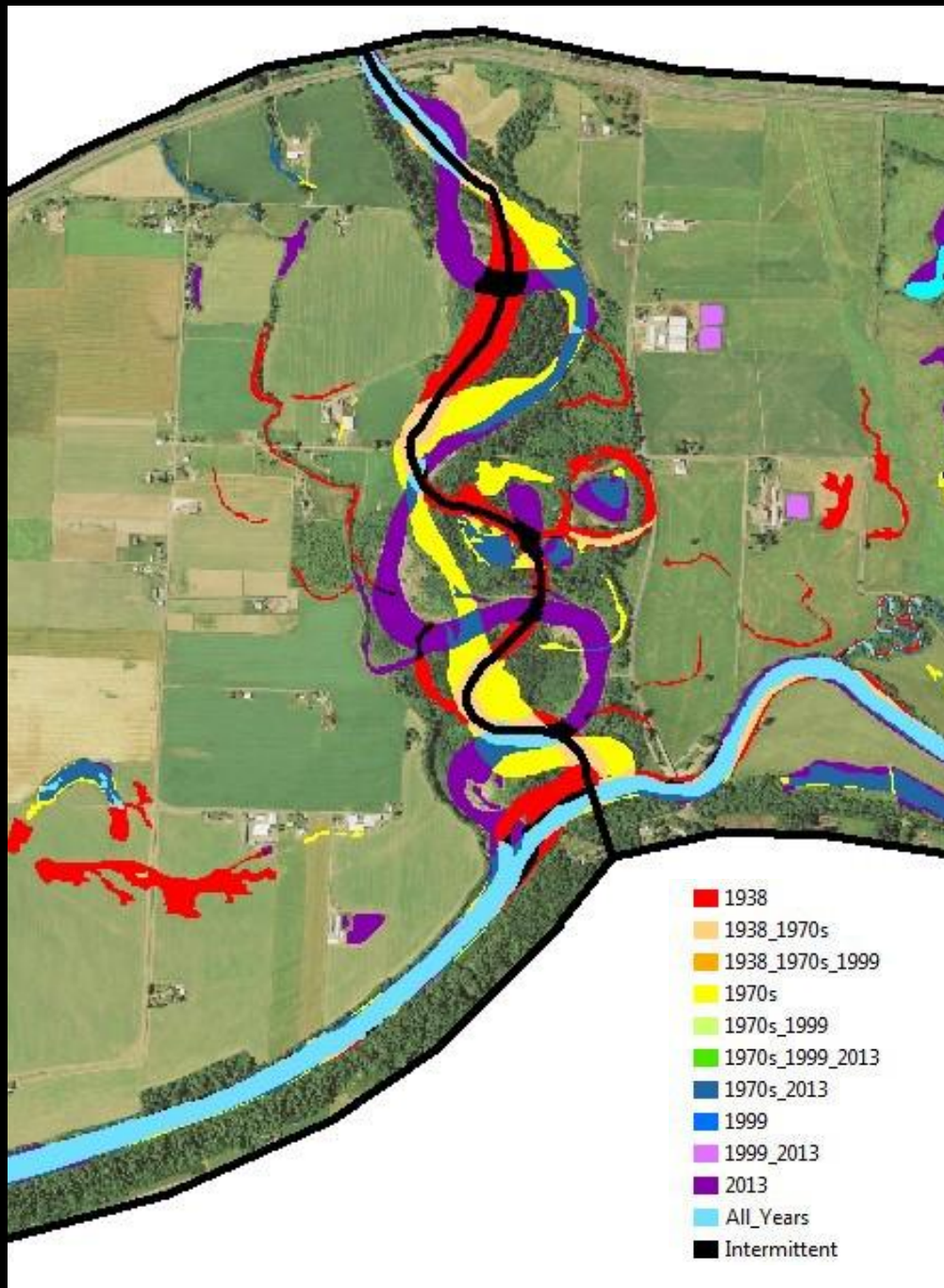




# A Natural Experiment

—

On the Satsop River near its confluence with the Chehalis Mainstem





**Questions?**